



IT'S ABOUT PEOPLE...NOT JUST SEAWATER

Follow Us!



LinkedIn: [linkedin.com/company/sustainable-seas-ltd](https://www.linkedin.com/company/sustainable-seas-ltd)

Email: info@sustainableseas.co.uk

Twitter: [@Sustainablesea1](https://twitter.com/Sustainablesea1)

Skype: [sustainable.seas](https://www.skype.com/en/contacts/sustainable.seas)

www.sustainableseas.co.uk

Sustainable Seas Ltd (SSL) is a global network of professionals **dedicated to helping coastal communities, businesses and governments to adapt to the climate change related development challenges that lie ahead.**

“I’m very grateful for the patience and professionalism you maintained throughout the consultancy. I really hope we work together more in the future.”

UNDP APRC/Fiji MCO



“SSL got to grips with our brief rapidly and supplied a polished report which required no further clarifications or elaboration – we were very satisfied.”

CARDIFF UNIVERSITY



“Sustainable Seas worked in The Gambia on the Mid and Final Evaluation of the EU funded Global Climate Change Alliance GCCA project. The work was much appreciated by stakeholders and definitely helped the project achieve better results.”

**GCCA PROJECT MANAGER EU
DELEGATION TO GAMBIA**

“It was again a performance of high quality which has proven instrumental towards the creation of a basis for us to move forward with the 10th EDF sea defence sector program in our negotiations with the Government.”

**DELEGATION OF THE
EUROPEAN COMMISSION
TO GUYANA**



WHAT WE DO

SSL is an international consulting firm established in 2010. We have provided technical assistance and research services in more than 30 small island development states (SIDS) that are vulnerable to the impacts of climate change.

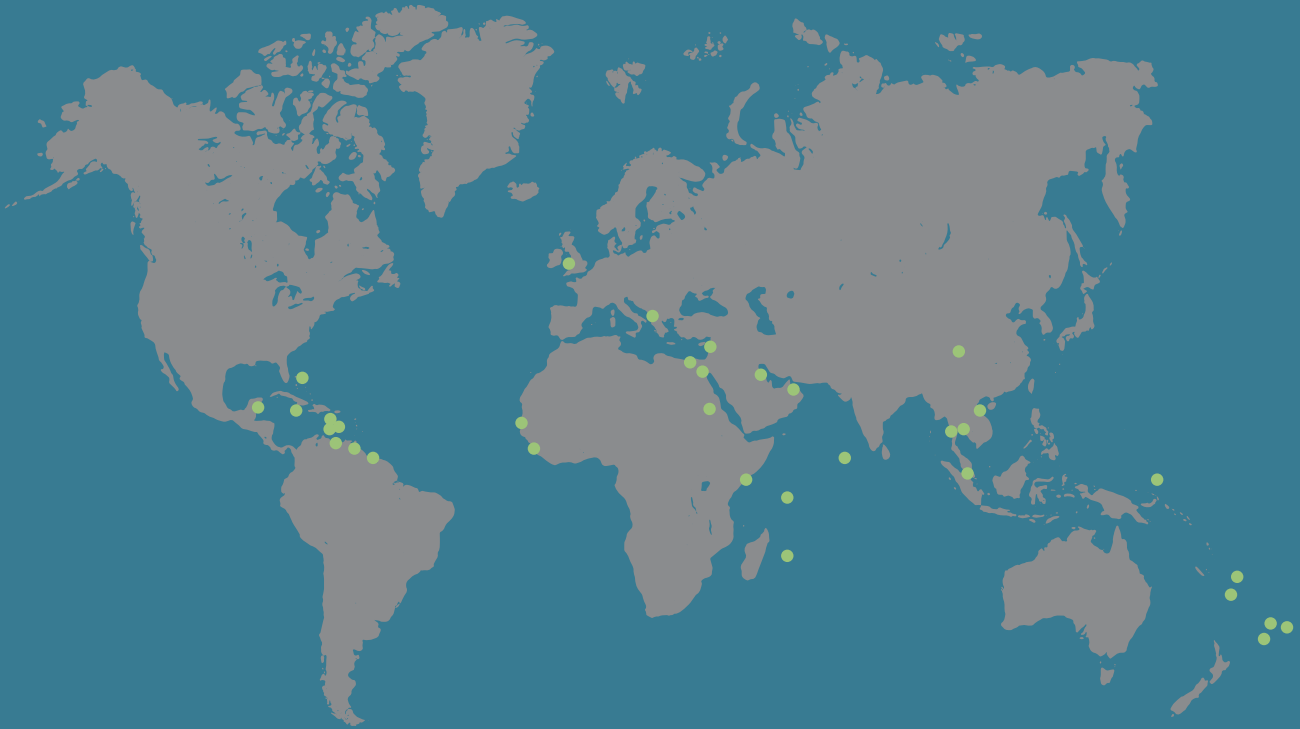
We have been providing consistent consulting services to improve the relationship between vulnerable livelihoods, natural resources and food security. We formulate national coastal strategies, mainstream adaptation strategies to prevent the impact of climate change on the coast, design mitigation options to reduce the causes of climate change, and facilitate access to new alternative coastal livelihood options to improve business resilience (including tourism, agriculture and ocean resource exploitation).





WHERE WE WORK

Our efforts spread over several continents:



Caribbean & Central/ South America

Belize	Trinidad and Tobago
Saint Lucia	Guyana
Jamaica	Grenada
Bahamas	Suriname
Barbados	Dominica
Montserrat	Turks & Caicos
St Kitts	

Europe

UK
Albania

Middle East

Lebanon
Jordan
Bahrain

Pacific

Cook Islands
Vanuatu
Tonga
Tuvalu
Samoa
Micronesia

African & Indian Ocean

Gambia
Sierra Leone
Egypt
Seychelles
Mauritius
Maldives

Asia

Thailand
Malaysia
Cambodia
Vietnam
China



OUR SECTORS: *Communities and Livelihood*

“We offer coastal communities achievable livelihood options to help plan for, manage and cope with climate and hazard related risks”.

Sustainable Seas Ltd helps SIDS to reduce community and livelihood vulnerabilities to the impacts of climate change. We have provided technical assistance to build and strengthen national institutional capacities for vulnerability assessment and adaptation planning. We also support national efforts to integrate climate change adaptation measures into development planning and ecosystem management practices. We provide training on issues of relevance to develop skills for planners and policy makers in justifying new introduction and new adaptation measures for coastal communities. We offer professional, practical advice to schools for SIDS to enable children with disabilities equal access to an inclusive education on coastal risks.

We also deliver individual one to one or group coaching sessions. Our aims are to empower young women and women to take control of their lives, enabling them to become more confident in who they are and from this, to develop sustainable coastal livelihoods and gender equality.





OUR SECTORS: *Communities and Livelihood*

PROJECT EXAMPLES

Terminal evaluation of UNEP GEF project “Vulnerability Assessment and Adaptation Programme for Climate Change in the coastal zone of Cambodia considering livelihood improvement and ecosystem (VAAP) (2017).

SSL were contracted to undertake a Terminal Evaluation to assess project performance of a US\$5.7m UNEP funded climate resilience project in Cambodia. Responsible for undertaking the evaluation design, data collection and analysis, and report-writing of the VAAP project including the delivery of all local community consultation to 3 coastal provinces in Cambodia.



Training CZMU staff on disaster risk management, Barbados (2016)

SSL were engaged to develop and deliver a 5 day training course to the staff of the Coastal Zone Management Unit – CZMU and Project Execution Team in disaster risk management and current developments in the sector and how it relates to ICZM delivery in Barbados.



Cook Islands – Development of a coastal policy for Mangaia Islands (2015)

SSL were engaged as technical experts to develop a participatory coastal management policy for the coastal communities from the island of Mangaia, adhering closely to the requirements of the Govt of Cook Islands mainstreaming and gender policies.





OUR SECTORS: *Disasters and Climate*

“We help to meet client needs by introducing creative ways of mitigating against disaster and climate change impacts”.

“Future proofing” the development of towns and cities on the coast is becoming more of a challenge to planners in light of climate change and disaster risk. Sustainable Seas Ltd are heavily involved in supporting SIDS with the institutional strengthening and strategic planning support that is required to help formulate and mainstream adaptation strategies. Our expertise can offer specialist technical and support services with regard to the production of disaster risk profiles and action plans, capacity building and training support, bespoke vulnerability and adaptation “toolkits” plus tailor made climate resilient guidelines for coastal areas. We specialize in Impact Assessments and Risk and Sensitivity Analyses whereby we evaluate the degree to which a built, natural or human system is directly or indirectly affected by either policy reforms or changes in climate conditions (e.g., temperature and precipitation) and we develop scenarios to forecast specific climate change impacts (e.g., sea level rise, increased water temperature etc).





OUR SECTORS: *Disasters and Climate*

PROJECT EXAMPLES

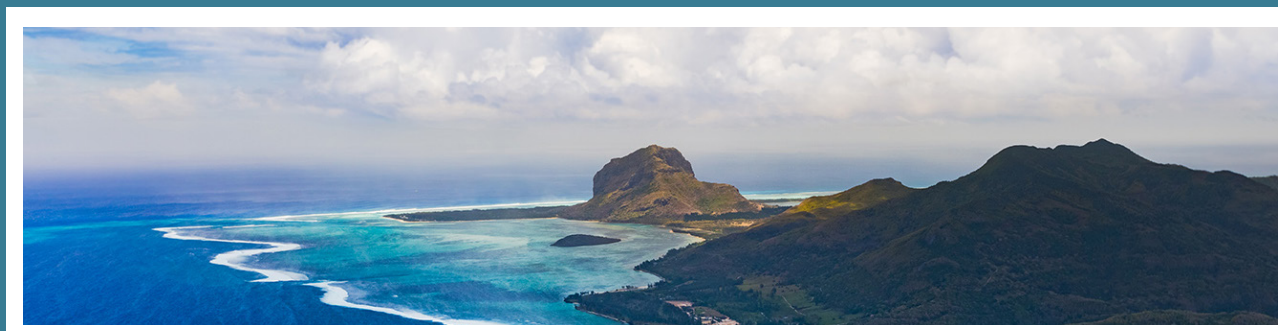
Maldives Laamu Atoll Island Planning Support (2016)

SSL were advisors to UNDP Maldives to develop a series of guidelines, tools, methodologies and systems for local climate resilient planning and management and support towards strengthening the capacity for integrated local development planning and management for Low Emission and Climate Resilient Development (LECRd).



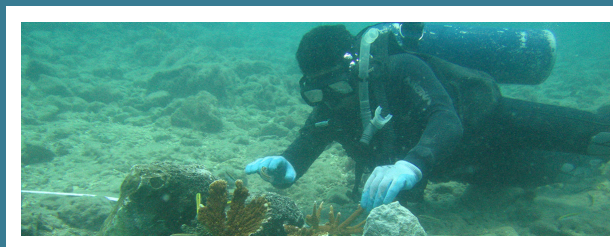
Mauritius National Coastal Zone Adaptation Strategy (2017)

Team Leader of 4 international and national consultants to increase climate resilience of communities and livelihoods in coastal areas in Mauritius. One of the main objectives of the programme is to improve and enhance policies and regulations that promote and enforce resilience of coastal communities and livelihoods for the country.



Grenada Second National Communication (SNC) (2017)

SSL provided contributions (as nominated Coastal Management Specialists) to the preparation and completion of Grenada's Second National Communication (SNC) to the UNFCCC. Coastal adaptation measures were proposed for future national incorporation within the SNC.



Belize Support for Improving Disaster and Climate Resilience in Sustainable Tourism (2017)

SSL staff were engaged as Disaster and Climate Change Specialists to CH2M to help produce feasibility studies and nature based intervention measures to support sustainable tourism development within Corozal District, Belize.





OUR SECTORS: *Ecosystems and Biodiversity*

“We adopt ecosystem based approaches to support the protection and re-creation of coastal and marine habitats”.

Sustainable Seas Ltd provide a range of services to help clients deliver small island marine and terrestrial ecosystem service products. Our expertise includes mangrove and wetland restoration guidance, coral reef rehabilitation advice, development of “living shoreline” engineering approaches and delivery of sustainable land management (agricultural planning advice). We have been involved in the preparation of field data collection exercises (baseline field assessment) and the preparation of coastal habitat action plan reports and marine protected area strategies. We can also offer specialist technical and support services with regard to coastal Environmental Impact Assessment (EIAs), marine consenting advice and aquaculture / fisheries / tourism projects.





OUR SECTORS: *Ecosystems and Biodiversity*

PROJECT EXAMPLES

Barbados Sandy Lane Beach Regeneration and Marine Conservation EIA (2016)

SSL were Team Leaders on the production of an EIA relating to the design and construction of a climate resilient beach enhancement project on the west coast of Barbados involving the placement of geosynthetic offshore reefs and supporting marine conservation rehabilitation programmes.



Jamaica National Coastal Management and Beach Restoration Guidelines (2017)

SSL were nominated as Team Leaders for Mott MacDonald to help produce new Coastal Management and Beach Restoration Guidelines for Jamaica. The spatial extent covered the ridge to reef profile and provided guidance on nature based interventions, hybrid interventions and non structural solutions (building codes, set back zones etc)



Tuvalu – Ridge to Reef Project Preparatory Grant (PPG) (2015)

Team Leader to design a Full Sized Project for the Ridge to Reef (R2R) project for Tuvalu involving appropriate ecosystem service situation analysis and extensive stakeholder consultations on issues surrounding lagoon health and marine conservation needs.



Vietnam – Coastal Integrated Planning Specialist (2015)

Expert services to improve the sustainable management of coastal capture fisheries in 8 Vietnamese coastal provinces. Work included institutional capacity strengthening for sustainable fisheries management; provision of best practices for sustainable aquaculture and training on ecosystem services.





OUR SECTORS: *Oceans and Coasts*

“We work in partnership with clients to provide practical management and engineering solutions within coastal and marine environments”.

At a global scale, Ocean Governance, Marine Spatial Planning (MSP) and Integrated Coastal Management (ICM) continue to be growing concepts and approaches for the twenty first century. They create practical ways to establish a more rational use of coastal and ocean space. Sustainable Seas Ltd is one of the few consultancy firms who have robust and demonstrated project experience in all 3 areas. We are commonly engaged with international donors (IADB, ADB, UNDP, European Commission, World Bank etc) in the preparation of full Project Documents, Action Fiches and terminal (final) and mid-term review monitoring and evaluation (M&E) of integrated coastal and marine management related projects.

We also maximise economic opportunities for clients, delivering sustainable beach tourism products, by providing a bespoke advisory service to the tourism industry (service providers and users) to help implement the new international standards for beach operators (ISO13009) around the world. Sustainable Seas Ltd is promoting the “ISOBeach” concept to this effect ([click here to find out more](#)) or email us: info@sustainableseas.co.uk



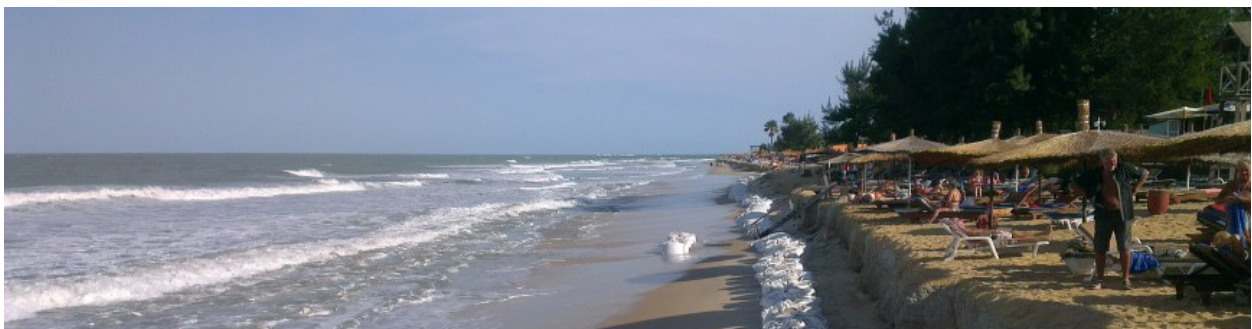


OUR SECTORS: *Oceans and Coasts*

PROJECT EXAMPLES

Gambia GCCA ICZM and Mainstreaming Climate Change Mid Term and Final Evaluations (2016)

SSL were contracted to undertake two separate evaluations (Mid Term and Final Evaluations in 2016). These were required to provide the relevant external co-operation services of the European Union the partner government and when appropriate, the wider public with an overall independent assessment of the past performance of the 'Global Climate Change Alliance (GCCA) support to The Gambia for Integrated Coastal Zone Management and the Mainstreaming of Climate Change' project. Both consultancies involved stakeholder reviews to help assess the GCCA programme in terms of the five standard EU evaluation criteria with Impact and Sustainability aspects considered as separate important areas.



Bahamas: Design and feasibility analysis of risk resilient ICZM Investment Program (2016)

SSL were Team Leaders for Mott MacDonald Ltd to support the preparation of a risk-resilient ICZM investment program for the Bahamas. Specific services included a detailed institutional arrangements assessment plus preparation of Terms of Reference for the design of an integrated national coastal risk information platform.



Diagnostic study to inform ICM in Vava'u, Tonga (2016)

SSL prepared a Diagnostic Study to inform an Integrated Coastal Management Plan for Vava'u, Kingdom of Tonga. This work included the production of a coastal erosion assessment report and outline policy document to help inform the subsequent development of an integrated coastal management (ICM) plan for Vava'u, Kingdom of Tonga.



Trinidad and Tobago: Design and feasibility analysis of risk resilient ICZM Investment Program (2016)

SSL were Team Leaders to CH2M to help support the design of a risk-resilient ICZM investment program. Services included the preparation of Terms of Reference for an integrated national coastal risk information platform. Engaged to develop and deliver a 3 day training course to the staff of the Institute of Marine Affairs (IMA) and other Ministries in disaster risk management and current developments in the sector and how this relates to ICZM in Trinidad and Tobago.





OUR CLIENTS

We are proud of our proven relationships with the following consultancies and private sector developers:



DEVELOPMENT AGENCIES

We are also proud of our growing relationships with the following multi-national and bilateral Development Agencies:



*Empowered lives.
Resilient nations.*

“Within any sector, questioning the norm is vital if real change is to happen. For me, witnessing some of our new “on the ground” coastal adaptation ideas and solutions for small islands, is what makes our work so worthwhile. The wise words of Albert Einstein reflect this perfectly....“We cannot solve our problems with the same thinking we used when we created them.”

Jonathan McCue, Managing Director of Sustainable Seas Ltd

PLEASE DON'T HESITATE TO CONTACT US

Follow Us!



LinkedIn: [linkedin.com/company/sustainable-seas-ltd](https://www.linkedin.com/company/sustainable-seas-ltd)

Email: info@sustainableseas.co.uk

Twitter: [@Sustainablesea1](https://twitter.com/Sustainablesea1)

Skype: [sustainable.seas](https://www.skype.com/en/contacts/sustainable.seas)

www.sustainableseas.co.uk

We look forward to hearing from you.



www.sustainableseas.co.uk

IT'S ABOUT PEOPLE...NOT JUST SEAWATER

Company Registration Number: 08587428 (England and Wales)